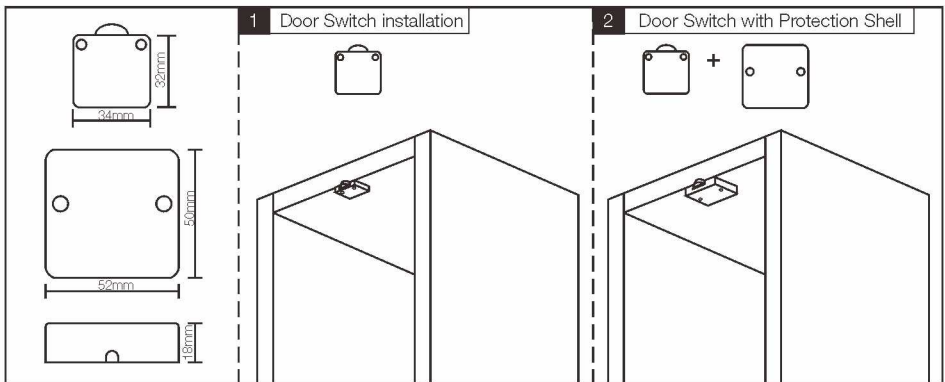


S1A-A3 Mechanical Switch

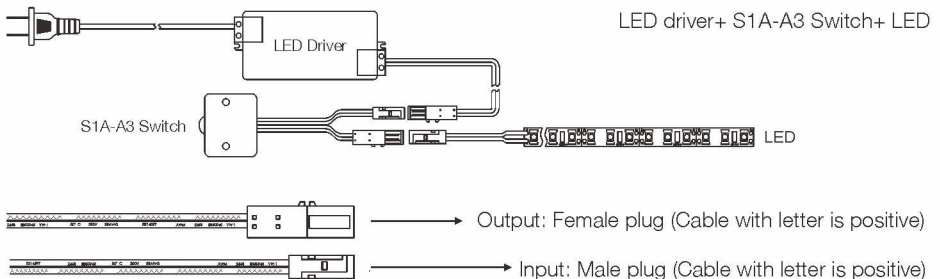


Voltage	DC12V / DC24V
Max watt	60W
Switch Mode	Press type
Material	Plastic, Black
IP Level	IP20
Size	52x50x18mm(Recessed)
Function	Door open-ON/Door closed-OFF

Installation Way



Connection



Notes

1. For indoor use only.
2. Do not disassemble the product.
3. Do not install the switch in water dropping place.
4. Use a dry cloth, never a strong cleaning agent.
5. Replace all set switch device if case of quality or malfunction.