

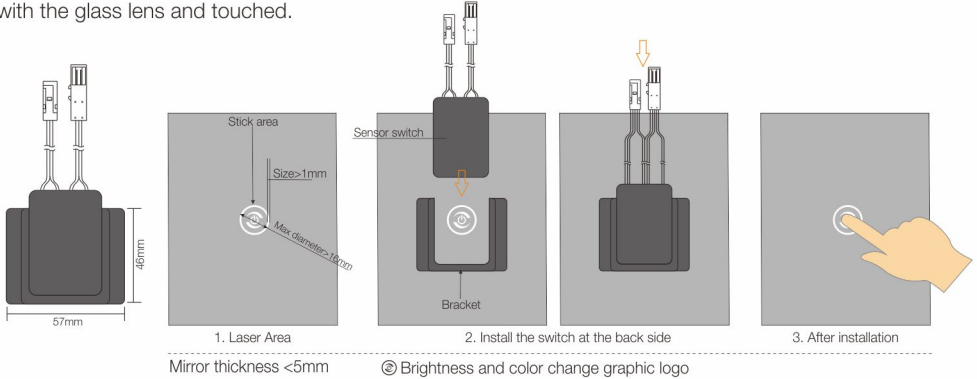
S7D-A1 Mirror Touch Dimmer Switch (ON/OFF/Dimmer/CCT Change)



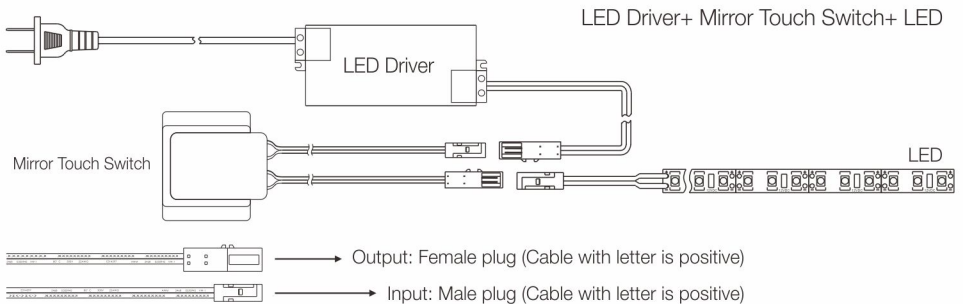
Voltage	DC12V / DC24V
Max watt	60W
Function	ON/OFF/Dimmer/CCT Change
Material	Plastic, Black
IP level	IP20
Size	50x33x10mm 57x46x4mm(Frame)

Installation Way

Tear the 3M tape off the mirror product, stick the switch on the glass, the center of the switch is aligned with the glass lens and touched.



Connection



Notes

1. For indoor use only.
2. Do not disassemble the product.
3. Do not install the switch in water dropping place.
4. Use a dry cloth, never a strong cleaning agent.
5. Replace all set switch device if case of quality or malfunction.

